

The HP Network ScanJet 5.



Technical Data

Easily convert paper documents to electronic information.

Feature-Rich and Versatile

HP Network ScanJet 5.

Now there's an easier way to get there.

Turning Paper Into Digital Information.

The HP Network ScanJet 5 lets you convert paper-based information into electronic information that's easy to distribute. You save time and money over conventional means of distributing documents while increasing productivity.

Connects directly to the network

The HP Network ScanJet 5 offers direct connectivity to major network operating systems and is easy to install and monitor via HP JetAdmin software.

Sharing information is easy

The Scan to Share feature allows

users to scan documents once, then distribute via the network to a variety of destinations, including public and private distribution lists, user groups and other users, as well as their own desktop.

A more reliable and cost-effective way to fax

With the Scan to Fax features, users can scan and fax documents via the LAN to multiple locations simultaneously. Fax destinations can be selected right from the easy-to-use control panel.

Work with documents in widely used applications

Link to Applications capabilities let users scan and immediately begin working with information in over 100 supported applications.

Specialized toolkits let you create customized links into business applications.

Converts paper-based information into electronic information

Advanced Optical Character Recognition (OCR) technology reliably and accurately converts paper documents into electronic information that can be used immediately in desktop applications such as word processors, work flow solutions and e-mail systems. There's no need to retype.

PaperPort for HP Software

The HP Network ScanJet 5 comes with PaperPort for HP software and features Optical Character Recognition (OCR) technology from Caere.

Reliable and Fast

15-ppm, 50-page ADF, plus flatbed 300-dpi, b/w and 8-bit grayscale, scanner jam rate < 1/4000, software, manual duplex mode.

Intuitive Control Panel

Simple-to-use control panel lets users easily select one or more destinations (individual users, network printers and fax numbers) to send scanned documents.

HP Administrative Software

Use HP JetAdmin software for remote visibility and management.

Advanced Features

- Group 4 compression for minimal bandwidth consumption
- Network copy function
- Automatic scanner setting selection
- Manual duplex mode

Market Leader OCR Technology

Caere OmniPage Limited Edition Optical Character Recognition technology provides optimal image quality, allowing users to immediately begin editing scanned documents in their word processing or spreadsheet applications.

Supports Major PC Operating Systems

Supports today's most popular PC operating systems including Windows® 3.1x and Windows for Workgroups, Windows NT 3.51 and 4.0, and Windows 95.

Scan to Share

Lets users scan documents once, then share with several co-workers throughout the office simultaneously.

Scan to Fax

Lets users scan and fax documents directly through the LAN via supported LAN fax solutions.

Direct Link to Applications

HP software lets users customize their own private distribution lists, redirect incoming documents to a preferred inbox or to a desired application using the Automatic Workflow "direct scanning to application" feature. Compatible with over 100 software applications.

Scan to Copy

Users can scan to copy by sending the document to any PCL 5-compatible printer on the network from the control panel.

Superior Network Connectivity

Connects directly to today's most widely used network operating systems.

Specifications.

Display
Easy-to-read LCD screen displays destinations to which scanned documents will be sent.

Soft Keys
For easy navigation of functions such as "Scan to Copy."

Scroll
Users can scroll through destination lists, select the destinations they want, then scan documents to these destinations with a single scan.

Alphanumeric Key Pad
Select a destination by simply typing in the destination name or number.

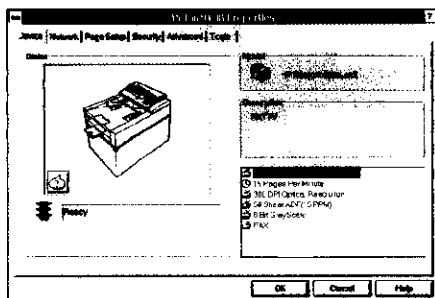
Setting Selection
The HP Network ScanJet 5 comes with preset scanner settings to scan text, photo and text, or photo.

Duplex Option
Manual two-sided scanning option.

Scanner	300 dpi, interpolation tuned for up to 1200 dpi Black-and-white, 4- and 8-bit grayscale 15-ppm Automatic Document Feeder and flatbed capability
Automatic Document Feeder	Holds up to 50 pages Jam rate < 1/4000 Supports paper sizes from A5 to legal
Control Panel	Intuitive usage model Graphic display, enhanced keyboard and alphanumeric keypad Error recovery information Easy access to long destination lists Distribution list selection at Control Panel Send to desktops, fax servers or printers One or more multiple destinations selectable simultaneously Copy to any PCL-5 printer connected to the LAN Designed for ease of use, but allows advanced functionality Transaction log support
LAN Connectivity	Ethernet 10Base-T, also supports Ethernet 10Base-2 Token Ring 4/16 Mbytes Ethernet 100Base-T, also supports Ethernet 10Base-T Ethernet 100VG anyLAN, also supports Ethernet 10Base-T
NOS Support	Novell NetWare 3.x and 4.x (NDS) (IPX) Microsoft Windows NT Domain server 3.51 and 4.0 (TCP/IP) IBM LAN Server 3.0 and 4.0 (TCP/IP) Support of multi-NOS environments Quick and easy to install and configure with HP JetAdmin administrative software for Windows and SNMP manageability HP JetAdmin software supported on 32-bit platform only
End-User Software	HP Network ScanJet 5 Utility software supports redirection to preferred inbox or direct link to top third-party software applications Ability to create personalized distribution lists Ability to choose preferred inbox (desktop, printer, e-mail, etc.) Ability to directly link incoming documents to supported applications Desktop software includes licenses for 25 concurrent users (see ordering information for additional 10-user license) PaperPort for HP and market-leading Caere Omnipage Limited Edition OCR technology run on Windows 3.1x and Windows for Workgroups, Windows 95, Windows NT 3.5x and 4.0
Image Processing	Automatic setting through firmware for best rendering to selected destinations G4 compression Data encapsulations for direct link to applications HP desktop allows users to create direct links to PC applications with optimized settings
LAN Fax	Fully integrated with supported versions of Castelle and Biscom LAN fax servers
Customization	Three levels of toolkits (PaperPort for HP, C/C++, Visual Basic) allow custom integration with company's workflow applications, system integration projects and other third-party software solutions
Duty Cycle	10,000 pages per month
Footprint	17.8 x 11.2 x 11.8 in
Weight	37.5 lb

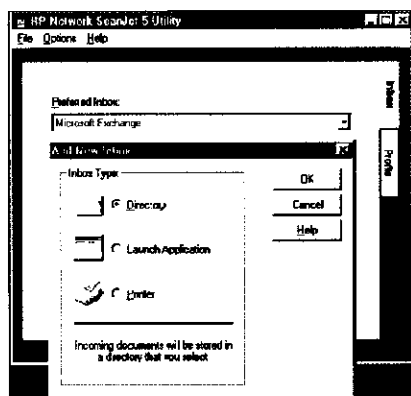
Broad software support for virtually every need.

HP JetAdmin software.



- Direct network connectivity and SNMP-compatible administrative software integrated into HP JetAdmin lets administrators remotely install and monitor activity easily.
- Use the same HP JetAdmin software to administer HP network printers.

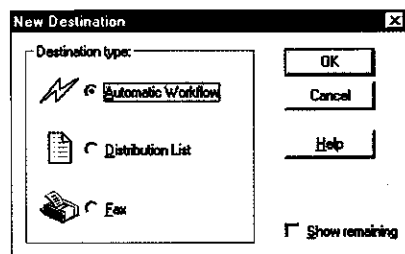
HP Network ScanJet Utility software lets users select and customize their inbox.



The HP Network ScanJet 5 features an intuitive control panel and end-user software that lets users understand and begin using the scanner within minutes—there's no extensive training required. With HP Network ScanJet 5 Utility software (HP-NSU), users can create new inboxes or select any number of applications or locations, such as a personal printer, as their default inbox. When a document is scanned to a user, it is placed in that user's work area on the network server. HP-NSU periodically checks the work area for new documents and, when one is detected, sends it to the inbox that the user has chosen. Any Windows application is able to accept an image or parameter. Supported inboxes include:

- **PaperPort for HP**—automatically selected the first time HP-NSU is run.
- **E-mail**—HP-NSU creates a mail message and attaches the document in a user-specified format, then sends the attached document to the user's e-mail account.
- **Printer**—HP-NSU prints the document on a user-specified printer.
- **Directory**—HP-NSU converts the document to a user-selected format and then copies it to a specified local or network directory.

Users can scan documents to the applications they use most.

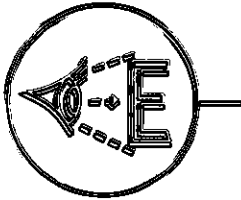


The Automatic Workflow “direct link to application” feature allows a user to directly link incoming documents to a supported user-specified application. Once the scanned document is received, it is routed to the configured Automatic Workflow application, which then automatically launches and begins processing the document.

The HP Network ScanJet 5 also comes with market-leading Caere OmniPage Limited Edition Optical Character Recognition (OCR) software (a “try before you buy” upgrade to OmniPage Pro also comes in the box).

The ideal shared network scanning solution.

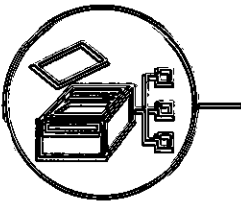
Scan and immediately edit documents using Optical Character Recognition (OCR) technology.



With market-leading Optical Character Recognition (OCR) technology, your users can scan and immediately begin editing documents in their word processing and spreadsheet applications, eliminating time-consuming retyping.

- Market-leading Caere OmniPage Limited Edition is included, plus a “try-before-you-buy” upgrade to OmniPage Pro.
- Allows your users to begin editing electronic documents immediately in their word processing and spreadsheet applications.
- Ships with licenses for 25 concurrent users, with unlimited installation.

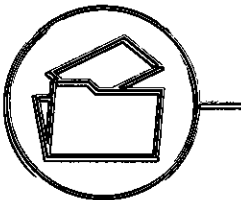
Utilize your LAN fax solution to distribute information to remote locations.



Users can scan and distribute documents electronically to remote locations such as branch offices or main headquarters via your company's LAN fax solution, eliminating illegible or misdirected faxes and reducing courier and overnight mailing expenses. Fax numbers can be typed in at the control panel or added to distribution lists.

- Fully integrated with Castelle and Biscom LAN fax servers.
- 15-ppm, 50-page Automatic Document Feeder (ADF) enables trouble-free scanning and faxing of lengthy documents.

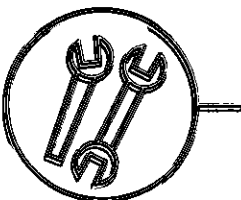
Convert paper documents to electronic information for forms processing and simplified storage and retrieval.



Save valuable space and reduce costs by converting paper documents into easily stored and retrieved electronic information. Archived documents can be accessed and used within seconds.

- Users can scan and store documents in personal folders on their desktop or to a designated location on the server.
- Reduces the cost of maintaining additional storage space and staff.
- Cardiff TELEform software allows you to easily scan, process and manage everyday business forms.

Toolkits let you integrate the HP Network ScanJet 5 with any application or workflow solution.



The PaperPort for HP toolkit and HP Network ScanJet 5 toolkits allow you to customize links to applications not supported by the HP Network ScanJet 5 or to your company's workflow solution. Three toolkits are available:

- **PaperPort for HP toolkit**—a DLL to build new links from the PaperPort desktop to applications running on Microsoft Windows (links built with the toolkit are immediately available for automatic workflow).
- **C/C++ toolkit**—a DLL for applications developed in C/C++, available for both 16- and 32-bit programming.
- **Visual Basic OCX toolkit**—a DLL for applications developed in Visual Basic, available for 16- and 32-bit environment. This toolkit is compatible with Diamond Head Software's ImageBASIC development environment.

Ordering information.

Number	Description
Standard Unit	
C1307A	HP Network ScanJet 5 Ethernet 10Base-T (RJ45), also supports Ethernet 10Base-2 (BNC)
C1308A	HP Network ScanJet 5 Token Ring 16/4
C1309A	HP Network ScanJet 5 Ethernet 100VG, also supports Ethernet 10Base-T (RJ45)
C1310A	HP Network ScanJet 5 Ethernet 100Base-TX, also supports Ethernet 10Base-T (RJ45) <i>Includes a built-in 50-page automatic document feeder, PaperPort for HP software with a license for 25 concurrent users, integrated OmniPage Limited Edition OCR, power cord, and CD-ROM containing network server and client PC administrative (HP JetAdmin) software and manuals.</i>
B2251A	Additional 10-user license for PaperPort for HP and Caere OmniPage Limited Edition

Hewlett-Packard peripherals, personal computers, supplies and accessories are available at authorized HP resellers worldwide. Call for the authorized HP reseller nearest you:

United States: 1-800-SCANJET (1-800-722-6538)
Canada: 1-800-367-3867
Asia Pacific: (852) 2599 7777
Australia/New Zealand: (61-3) 9272 2895
Europe/Africa/Middle East: (41) 22 780 8111
Japan: (03) 3331 6111
Latin America: (305) 267-4220 (Miami)
(525) 326-4044 (Mexico City)

Product Regulatory Compliance.

Questions concerning regulatory agency compliance should be directed to the local Hewlett-Packard Sales and Service Office.

UL1950
CSA 22.2 No. 950-93
IEC950/EN60950
IEC825-1/EN60825-1 Class 1
NOM-019-SCFI-1993
FCC Part 15 Class A
CISPR 22/EN55022 Class A
EN50082-1:1992
IEC 1000-4-2/prEN55024-2
IEC 1000-4-3/prEN55024-3
IEC 1000-4-4/prEN55024-4
IEC 1000-3-3/EN61000-3-3
IEC 1000-3-2/EN61000-3-2

Hewlett-Packard provides a number of sources for more information on HP scanners.

- The HP Customer Support Center provides fast assistance by telephone: (208) 323-2551* U.S.; 431 20 606 8708 Europe.
- HP Automated Support Access Program (HP ASAP) provides recorded answers and fax support for hardware and software information 24 hours a day: 1-800-333-1917.*
- The HP Peripherals Forum on CompuServe ("GO HP") puts you in contact with other HP peripheral users who may be able to provide online responses to technical questions.
- Information about HP products is also available through Access HP, Hewlett-Packard's home page on the World Wide Web: <http://www.hp.com>
- Information about the HP Network ScanJet 5 is also available on the World Wide Web: http://www.hp.com/go/network_scanning.

* These services are based in the United States. Outside the U.S., call your HP regional office listed above for information on country-specific support.

Other Electronic Information
America Online:
Keyword HP

Other Customer Numbers
HP FIRST fax information service: 24 hours a day
(800) 231-9300

Automated dealer sales locator: 24 hours a day
(800) 243-9812

Automated dealer service locator: 24 hours a day
(800) 243-9816

Castelle is a registered trademark of Castelle Company. Biscom is a trademark of Biscom, Inc. OmniPage and Caere are registered trademarks of Caere Corporation. TELEform and Cardiff Software are registered trademarks of Cardiff Software, Inc. Diamond Head Software and ImageBASIC are registered trademarks of Diamond Head Software, Inc. Windows and Microsoft are registered trademarks of Microsoft Corporation in the U.S. and other countries.

The information in this document is subject to change without notice.

